

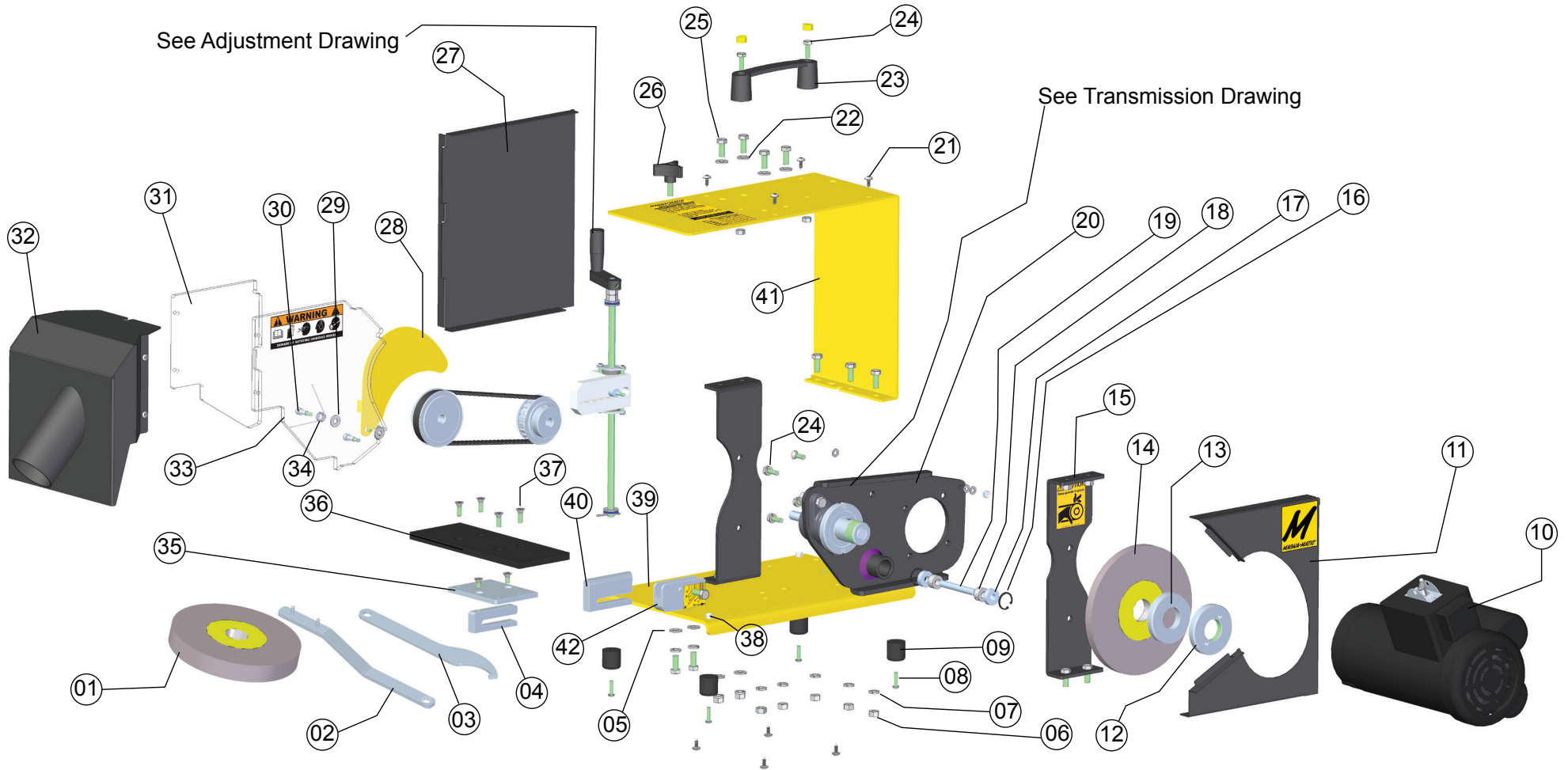


# PARTS DIAGRAM FOR:

## MAG-8000 Series Sharpener [gen6]

Covering Models manufactured from 09/2012 to Present

In 09/2012 the worktables (blade rests) for the MAG-8000 were redesigned to allow the operator to "dial-in" specific blade edge angles. The only parts that changed from gen5 to gen6 are mainly key numbers: 36, 35, 02, 42, 40, and 04.



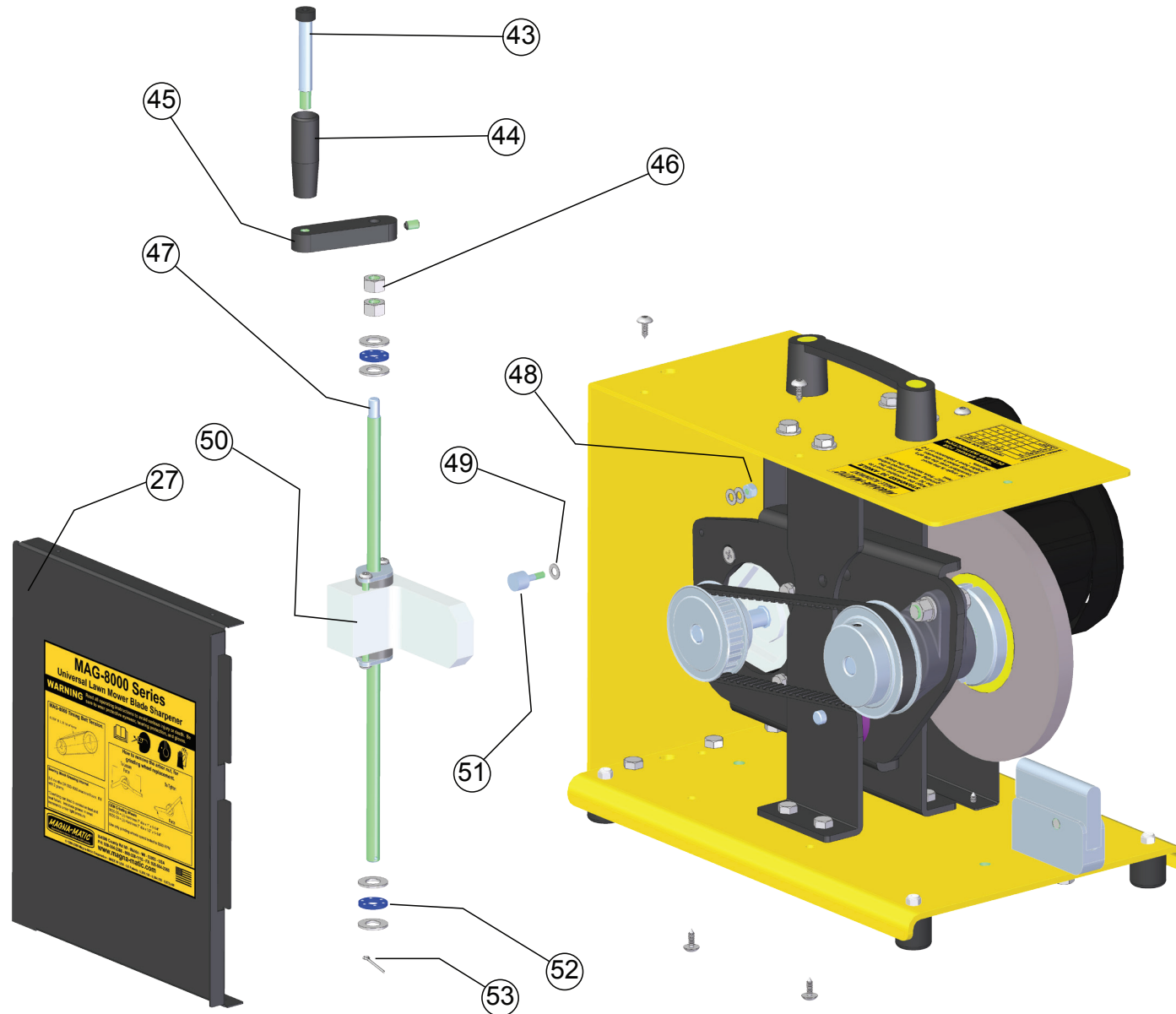
Magna-Matic Corporation - W4599 County Road IW - Waldo WI 53093 USA

Phone: (920) 564-2366 - FAX: (920) 564-2368 - Toll Free USA & Canada **1-800-328-1110**

<http://www.magna-matic.com> - email: [sales@magna-matic.com](mailto:sales@magna-matic.com) © Copyright 2012 All rights reserved

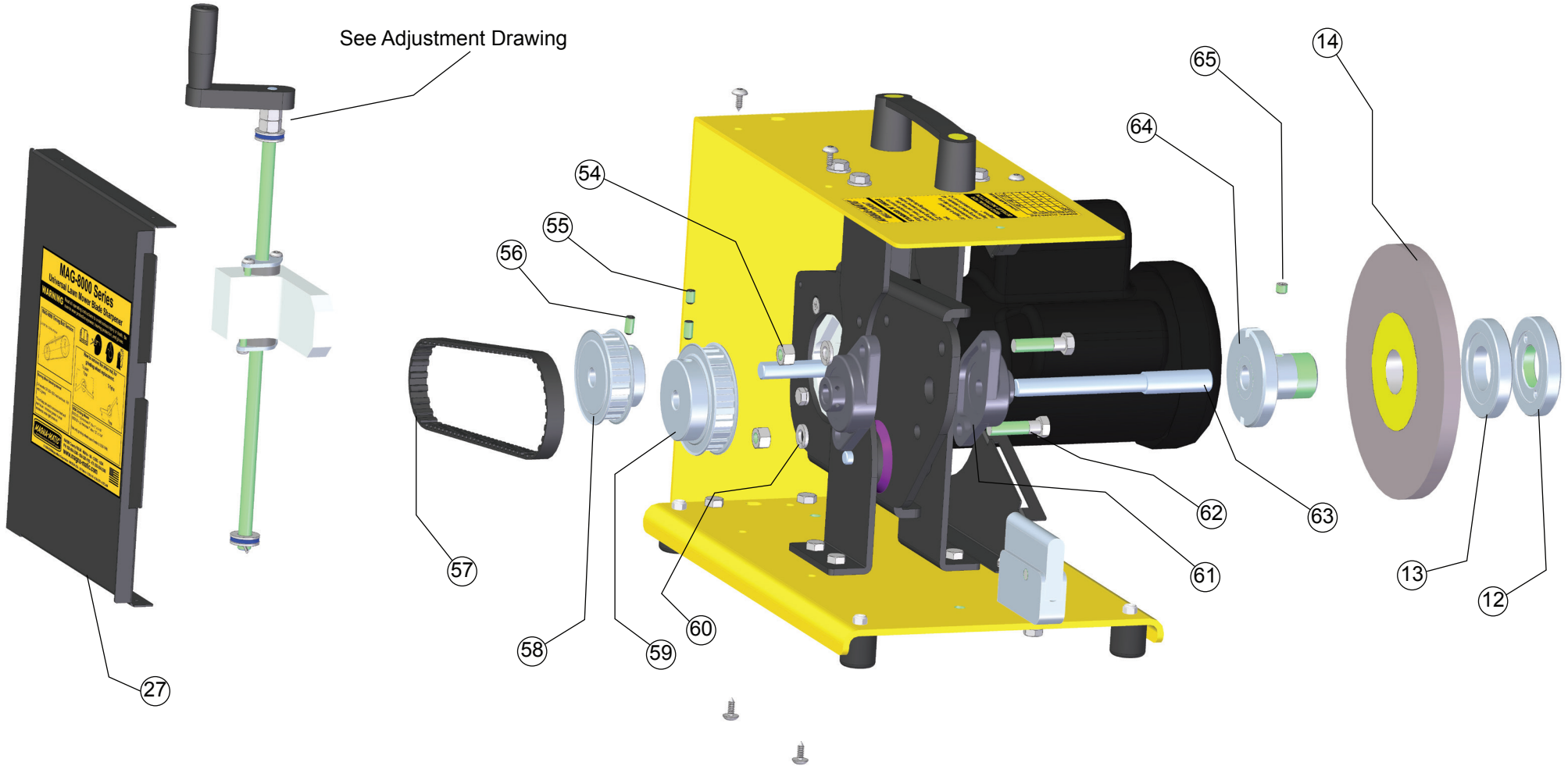


# PARTS DIAGRAM FOR: MAG-8000 Series Sharpener [gen6] Covering Models manufactured from 09/2012 to Present





# PARTS DIAGRAM FOR: MAG-8000 Series Sharpener [gen6] Covering Models manufactured from 09/2012 to Present





# PARTS DIAGRAM FOR:

## MAG-8000 Series Sharpener [gen6]

Covering Models manufactured from 09/2012 to Present

The MAG-8000 Universal Lawn Mower Blade Sharpener is the most advanced, highest performance, most patented lawn mower blade sharpener in the outdoor power equipment (OPE/Green) industry. The MAG-8000 is able to sharpen curved (mulching) edge blades by using a 1/2" wide grinding wheel and a curved worktable insert that follows the curvatures of the blade. This allows the MAG-8000 to keep the same angle along the length of the cutting edge. The MAG-8000 can quickly switch back to sharpening straight (conventional) edge blades with its flat worktable insert.

| Key # | Part #         | Description   |
|-------|----------------|---|
| 1     | 9000-35        | Grinding wheel 1" wide  |
| 2     | 9000-21        | Spanner wrench  |
| 3     | 9000-53        | Arbor wrench  |
| 4     | 8000-77        | Flat worktable insert (lower)                                 |
| 5     | H-31WFZ        | 5/16 flat washer (8)  |
| 6     | H-31CNFZ       | 5/16-18 nut (11)  |
| 7     | H-31WLZ        | 5/16 lock washer (13)   |
| 8     | H-18C75BSSss   | #10-24x3/4 screw (8)  |
| 9     | 9000-11        | Rubber foot (4)   |
| 10    | 8000-25        | 1 hp motor  |
| 11    | 8000-56        | Steel guard (motor-side)                                      |
| 12    | 9000-19        | Arbor nut   |
| 13    | 8000-27        | Arbor spacer (required for use with 1/2" wide grinding wheel) |
| 14    | 8000-30        | Grinding wheel 1/2" wide                                      |
| 15    | 8000-45        | Pivot angle full-height (2)                                   |
| 16    | 1000-22        | Retaining ring (2)  |
| 17    | 1000-23        | Bearing (2)   |
| 18    | 1000-20        | Bearing collar (2)  |
| 19    | 8000-36        | Pivot shaft   |
| 20    | 8000-23        | Pivot plate   |
| 21    | H-18N50SPT-Z/A | #10 sheet metal screw (8)                                     |
| 22    | H-31WFZ        | 5/16 flat washer (15)   |
| 23    | 9000-58        | Carry handle  |
| 24    | H-25C75HSZ     | 1/4-20x3/4 bolt (5)   |
| 25    | H-31C75HSZ     | 5/16-18x3/4 bolt (13)   |
| 26    | 8000-60        | Knob  |
| 27    | 8000-54        | Steel guard (pulley-side)                                     |
| 28    | 8000-58        | Active guard  |
| 29    | H-25WFZ        | 1/4" flat washer (2)  |

| Key # | Part #      | Description                          |
|-------|-------------|--------------------------------------|
| 30    | H-25N050KSS | 1/4-20 x 0.50 long shoulder bolt (3) |
| 31    | 8000-67     | Lexan guard (pulley-side)            |
| 32    | 8000-74     | Grit guard                           |
| 33    | 8000-68     | Lexan guard (motor-side)             |
| 34    | 8000-59     | Torsion spring                       |
| 35    | 8000-78     | Steel flat worktable support         |
| 36    | 8000-80     | Flat worktable (long)                |
| 37    | H-25C75PFZ  | 1/4-20x3/4 screw (5)                 |
| 38    | H-18CNINFZ  | #10-24 nylon nut (8)                 |
| 39    | 8000-24     | Bottom plate                         |
| 40    | 8000-76     | Rounded worktable insert             |
| 41    | 8000-20     | Top plate                            |
| 42    | 8000-75     | Worktable insert vice                |

### MAG-8000 Adjustment Parts Key

| Key # | Part #       | Description                    |
|-------|--------------|--------------------------------|
| 43    | H-37N200KSS  | Shoulder bolt for crank handle |
| 44    | 9000-14      | Crank handle                   |
| 45    | 9000-13      | Crank base                     |
| 46    | H-37CNFZ     | 3/8-16 zinc nut (2)            |
| 47    | 8000-49      | Threaded adjusting rod         |
| 48    | H-18FNINFZ   | #10-32 nylon nut               |
| 49    | H-18WFZSS    | #10 flat washer (3)            |
| 50    | 8000-46      | Adjustment block               |
| 51    | 8000-47      | Cam-follower                   |
| 52    | 9000-37      | Thrust bearing (2)             |
| 53    | H-Cotter Pin | Cotter pin                     |

### MAG-8000 Transmission Parts Key

| Key # | Part #      | Description              |
|-------|-------------|--------------------------|
| 54    | H-37CNFZ    | 3/8-16 nut (2)           |
| 55    | H-25C37SSS  | 1/4-20x3/8 set screw     |
| 56    | H-25C50SSS  | 1/4-20x1/2 set screw (2) |
| 57    | 8000-14     | Timing belt              |
| 58    | 8000-13     | 20 tooth pulley          |
| 59    | 8000-15     | 24 tooth pulley          |
| 60    | H-37WLZ     | 3/8 lock washer (2)      |
| 61    | 8000-09     | Flange bearing (2)       |
| 62    | H-37C150HSZ | 3/8-16x1.5 bolt (2)      |
| 63    | 8000-07     | Drive shaft              |
| 64    | 9000-20     | Arbor                    |
| 65    | H-31F25SSS  | 5/16-24x1/4 set screw    |

Magna-Matic Corporation - W4599 County Road IW - Waldo WI 53093 USA

Phone: (920) 564-2366 - FAX: (920) 564-2368 - Toll Free USA & Canada **1-800-328-1110**

<http://www.magna-matic.com> - email: [sales@magna-matic.com](mailto:sales@magna-matic.com) © Copyright 2012 All rights reserved