



SERVICE BULLETIN: 8000-81-KIT

Installation Instructions to UPDATE worktables.

MAG-8000 Series Sharpener Protected by US Patent# 6,368,196 - 6,364,750 - 6,572,448



WARNING

WHEN USING ELECTRIC TOOLS, BASIC SAFETY PRECAUTIONS SHOULD ALWAYS BE FOLLOWED TO REDUCE THE RISK OF FIRE, ELECTRIC SHOCK, AND PERSONAL INJURY.



CAUTION

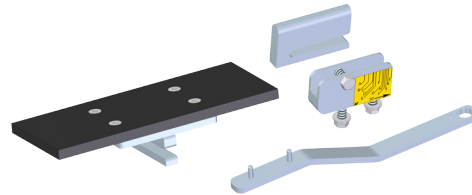
TURN OFF AND UNPLUG BEFORE SERVICING!

Tools Required.

- One square
- One 1/2" wrench

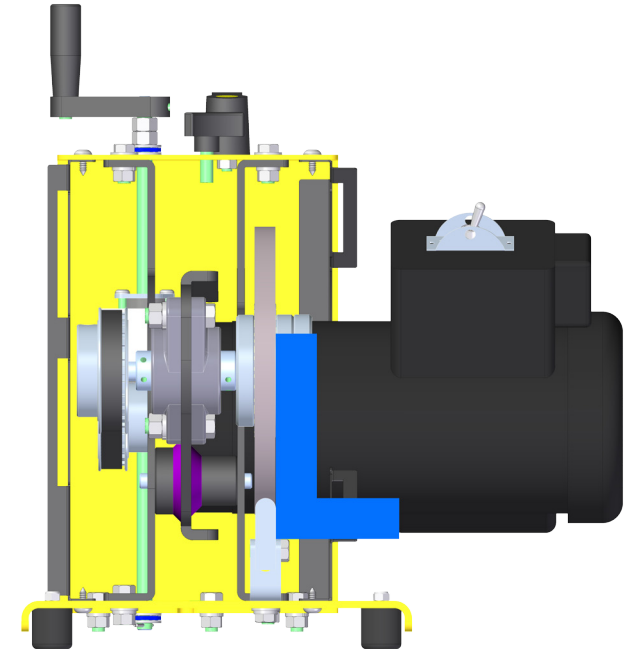
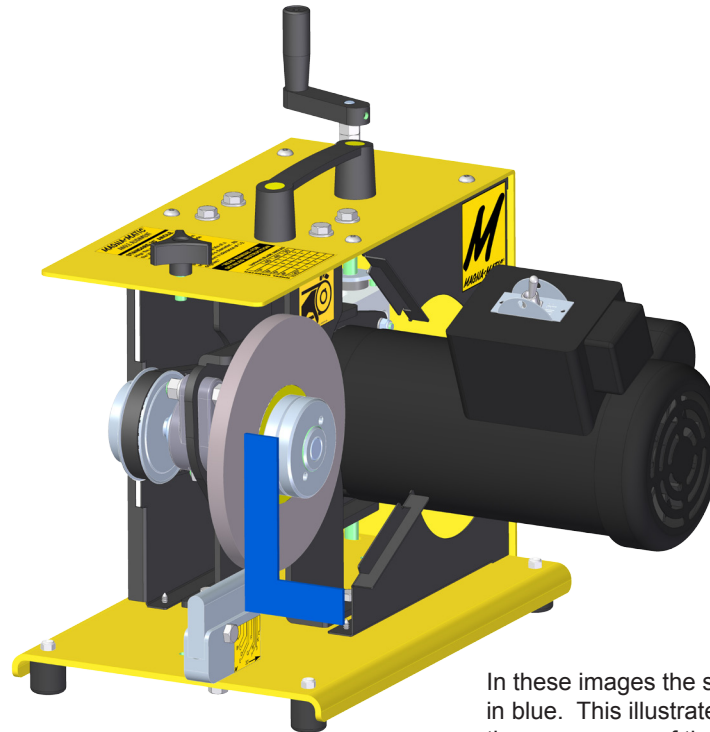
Installation

1. First remove the grit guard, this will provide more room, and make the installation easier.
2. Tip the MAG-8000 up on its back, this will provide access to the underside of the sharpener.
3. Use the 1/2" wrench to remove the two bolts holding the old rounded worktable.
4. Take the new worktable vice, and the new hardware included. The flat washers should contact the yellow body, then the lock washer under the bolt heads.
5. DO NOT - completely tighten the bolts, only tighten them to slightly compress the lock washers.
6. Mount a 1/2" wide grinding wheel on the MAG-8000.
7. Place the rounded worktable insert in the vice and tighten it with a 1/2" wrench.
8. Lower the 1/2" wheel down as close as possible to the rounded worktable insert.
9. Hold the square against both the rounded worktable insert, and the 1/2" grinding wheel to ensure the rounded worktable is in-line with the grinding wheel.
10. Use the 1/2" wrench to tighten the bolts, but when doing so rotate one bolt then the other, and continue to alternate between the two. This will prevent the worktable vice from twisting while its being tightened.



The 8000-81-KIT includes the following:

- Spanner wrench
- Flat worktable insert
- Rounded worktable insert
- Worktable vice (with hardware)



In these images the square is shown in blue. This illustrates how to check the squareness of the worktable vice to the grinding wheel.