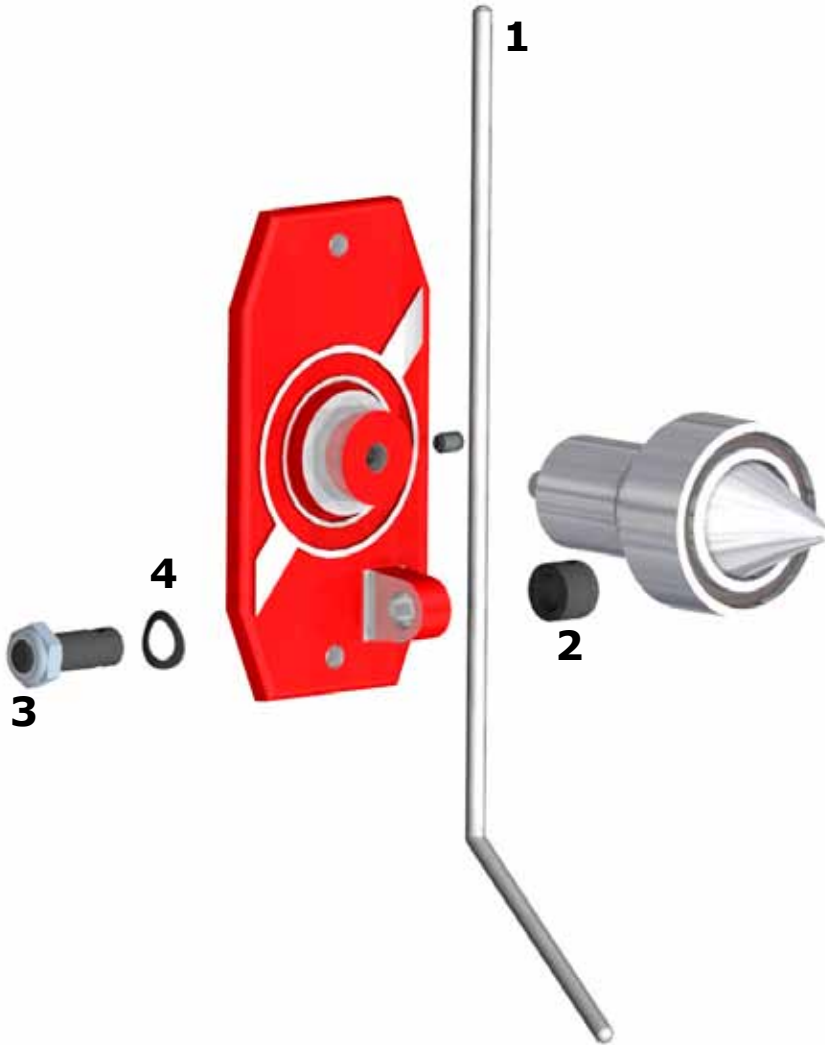




# PARTS DIAGRAM FOR: MAG-1000 / MAG-1000G / MAG-1000GC

The MAG-1000 Series is a product line of precision static rotational balancing instruments manufactured in the USA by Magna-Matic Corporation since 1958. Intended for use with the following: lawn mower blades, circular saw blades, fan blades, impellers, hub products, pulleys, flywheels, or any part made of ferrous metal with a central mounting hole (dia. 5/16 inch to 1-1/2 inch.)



MAG-1000 Series Specifications

Dimensions	3.5" x 5" x 12"
Weight	4 lbs
Hole Range	5/16" to 1.5"
Part Weight limit	50 lbs max. (with full magnet contact)

Key #	Part #	Description
1	1000-03	Stainless Steel Gauge Rod
2	1000-04	Gauge Rod Bushing
3	1000-05	Gauge Rod Stud
4	1000-06	Deflection Spring Washer

Due to the nature of this product other parts, or repair must be done by the factory to maintain accuracy, visit our website for details on balancing instrument rebuilding, or contact us directly.