



# SERVICE BULLETIN: MAG-8000 [gen3 to gen4]

## Quick wheel change grit guard UPDATE

MAG-8000 Series Sharpener



### WARNING

WHEN USING ELECTRIC TOOLS, BASIC SAFETY PRECAUTIONS SHOULD ALWAYS BE FOLLOWED TO REDUCE THE RISK OF FIRE, ELECTRIC SHOCK, AND PERSONAL INJURY.



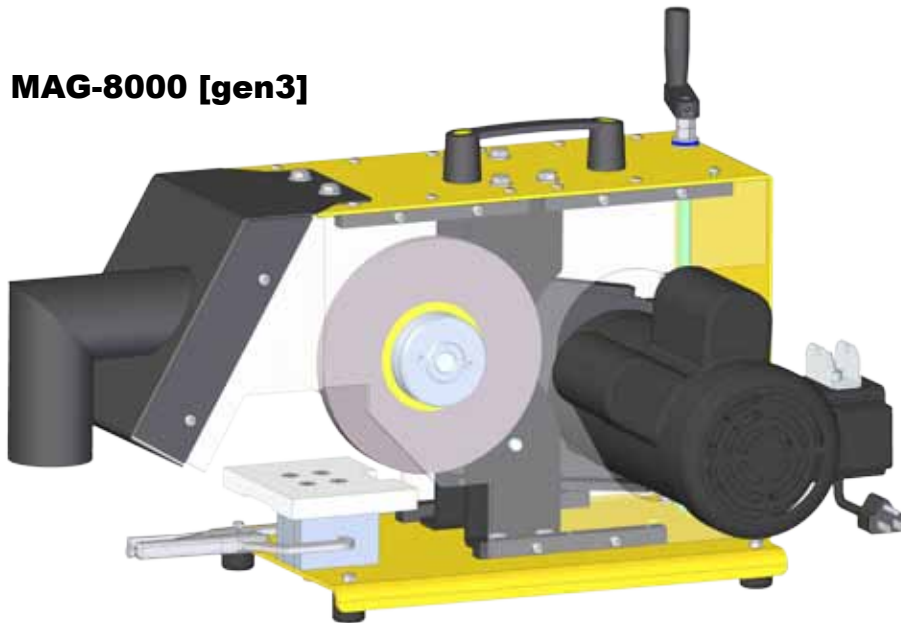
### CAUTION

**TURN OFF AND UNPLUG  
BEFORE SERVICING!**

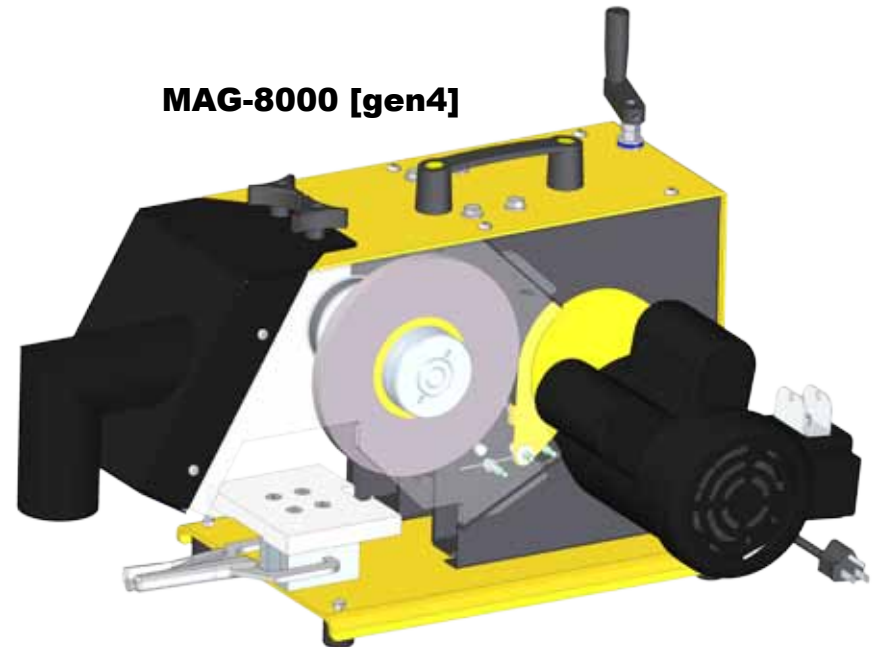
New for August 2010 the MAG-8000 entered generation 4. This new MAG-8000 has the clear lexan safety guards attached to the grit guard for faster grinding wheel changing. The steel guards on [gen4] are the interlocking support for the clear lexan guards. Another addition is the active-guard which is the yellow steel spring-loaded guard that rides over the motor.

To access the grinding wheel you simply need to remove the two plastic knobs above the grit guard and the whole grit guard and side clear lexan guards all pull away providing full access to the grinding wheel for fast easy removal. As opposed to generation 3 where six small allen screws to remove the large clear lexan guard to gain access to the grinding wheel.

**MAG-8000 [gen3]**



**MAG-8000 [gen4]**

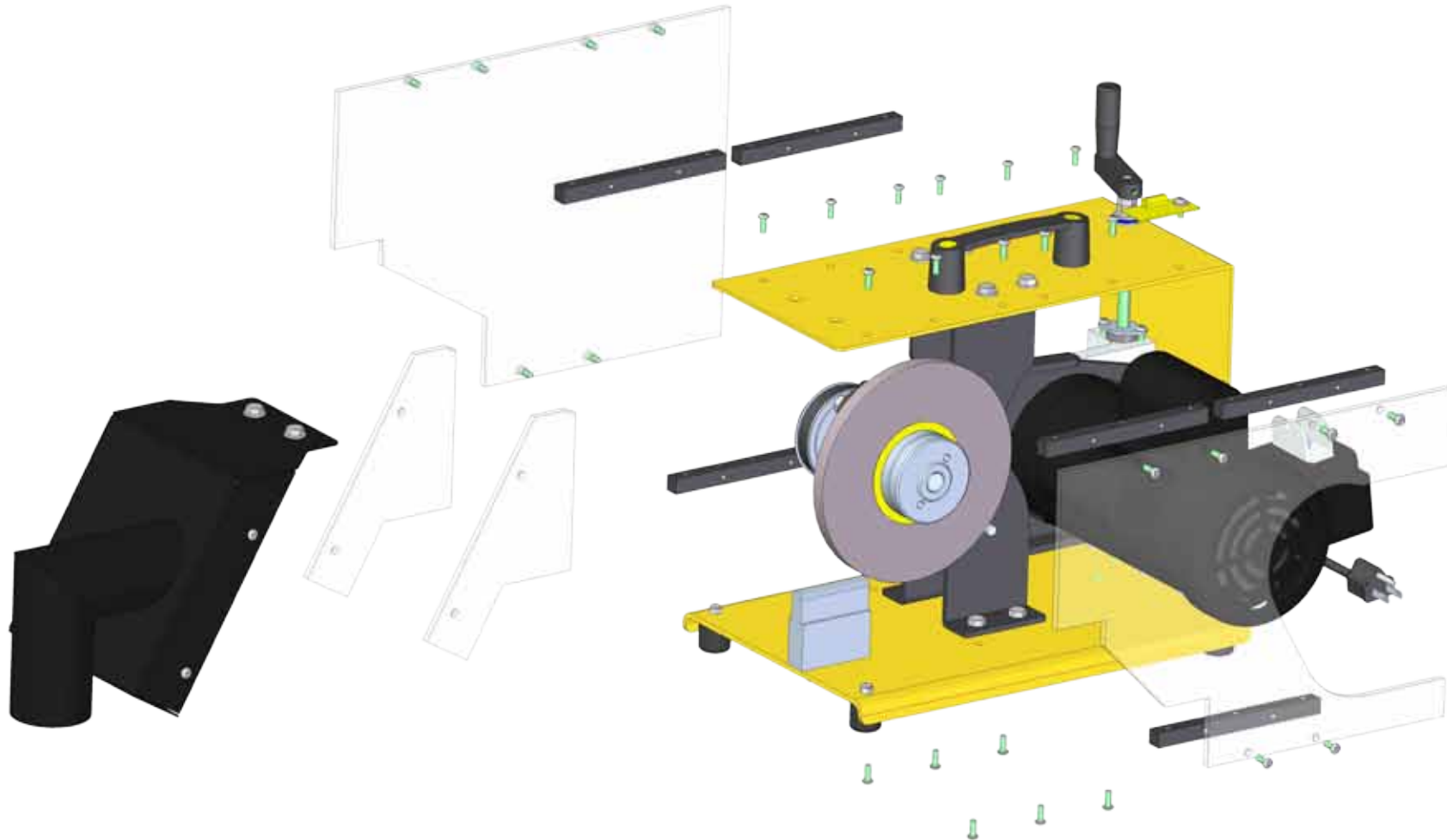




# SERVICE BULLETIN: MAG-8000 [gen3 to gen4] Quick wheel change grit guard UPDATE MAG-8000 Series Sharpener

## DISASSEMBLY

1. Using an 1/8" allen wrench remove all the bolting bars and clear lexan guards from the yellow body of the MAG-8000.
2. Using two 1/2" open ended wrenches remove the two bolts that hold the black grit guard to the yellow top of the MAG-8000
3. Using an 1/8" allen wrench and 3/8" open ended wrench remove the clear lexan guards from the black grit guard.
4. This completes the disassembly portion of the update.

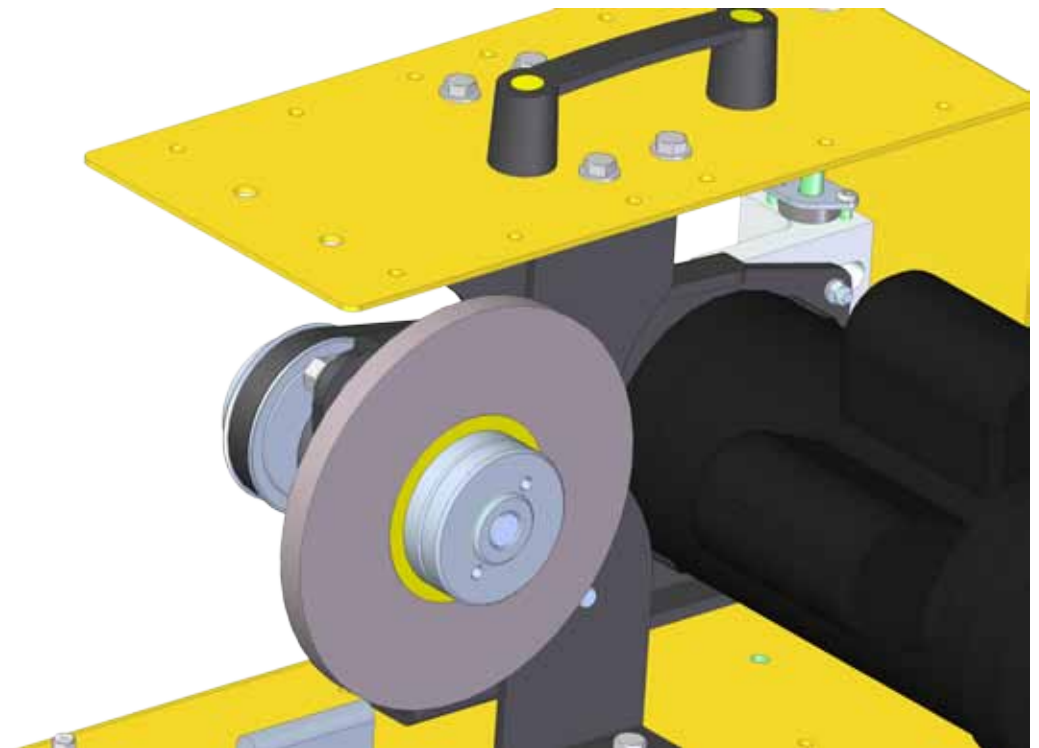




# SERVICE BULLETIN: MAG-8000 [gen3 to gen4] Quick wheel change grit guard UPDATE MAG-8000 Series Sharpener

## MODIFICATIONS

1. Using a 1/2" drill - enlarge the two mounting holes of the black grit guard.
2. ALTERNATE OPTION - if you have access to a milling machine - you can slot the holes on the black grit guard so that you will only need to loosen the two knobs to remove the grit guard, rather than unscrewing the plastic knobs out to remove the grit guard.
3. Using a 7/16-20 tap - thread the two mounting holes on the top yellow plate of the MAG-8000.

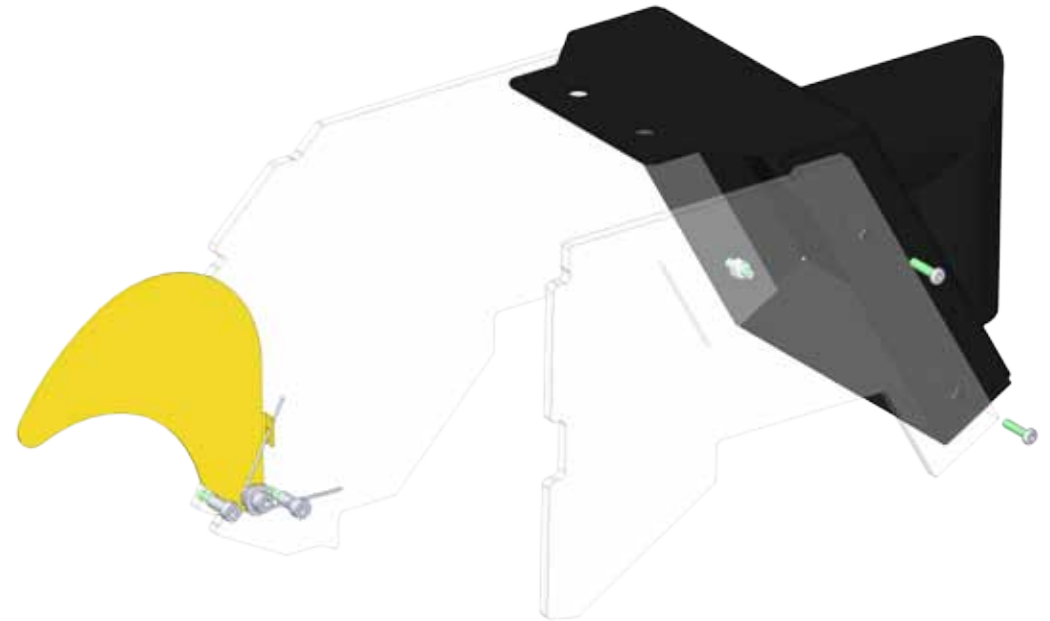
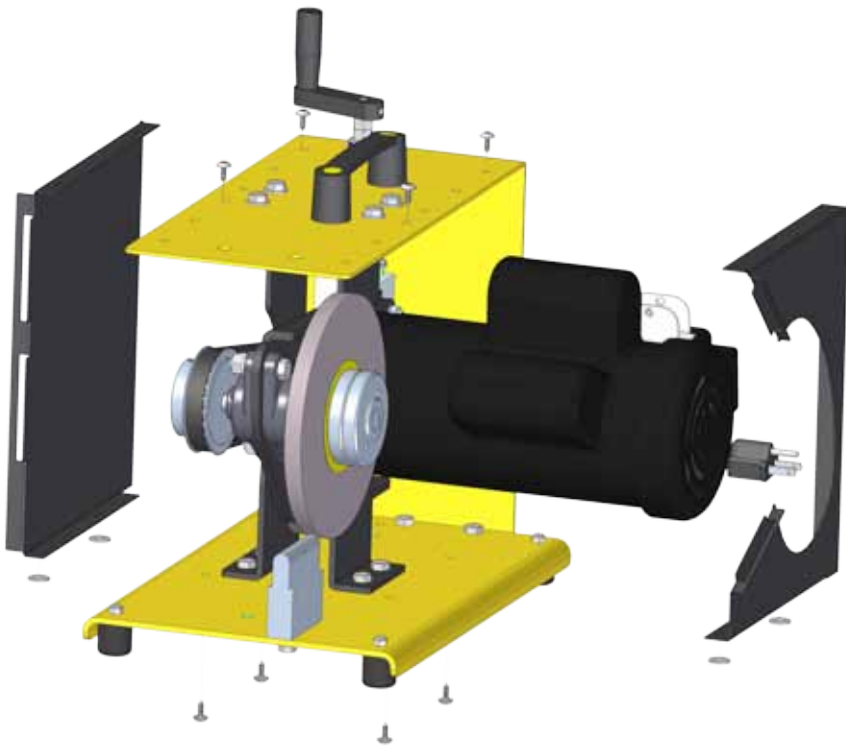




# SERVICE BULLETIN: MAG-8000 [gen3 to gen4] Quick wheel change grit guard UPDATE MAG-8000 Series Sharpener

## ASSEMBLY

1. First install the black steel side guards. You will need a Phillips screw driver, and use the sheet metal screws included with the kit.
2. Included in this kit, are flat washers. These can be used as shims if required due to tolerance variation
3. Bolt the clear lexan guards to the black grit guard.
4. The lexan guard with the yellow spring-loaded active guard goes on the inside of the black grit guard
5. The other lexan guard for the pulley-side is mounted to the outside of the black grit guard.





# SERVICE BULLETIN: MAG-8000 [gen3 to gen4] Quick wheel change grit guard UPDATE MAG-8000 Series Sharpener

## Steps to connect the grit guard to the MAG-8000.

1. The yellow ACTIVE GUARD must be on the inside of the black steel guard by the motor.
2. The top lip of the grit guard must be on top of the yellow top body plate of the MAG-8000
3. Slide the grit guard assembly into the MAG-8000 and the interlocking tabs and lips will engage keeping the guards solid.
4. Screw both plastic knobs into the threaded holes to hold the grit guard assembly in place.

If you have any questions please contact us at 800-328-1110 or [sales@magna-matic.com](mailto:sales@magna-matic.com)

In the images you can better see how the clear lexan guard tabs fit into the slots of the black steel guards to engage each other.

Once the ACTIVE GUARD (the curved yellow part attached to the clear lexan) is on the inside of the curved black steel guard, and the grit guard lip is on top of the yellow body, everything slides into place. Tighten the grit guard assembly with the two knobs and you are finished.

